

MOUNTING INSTRUCTIONS



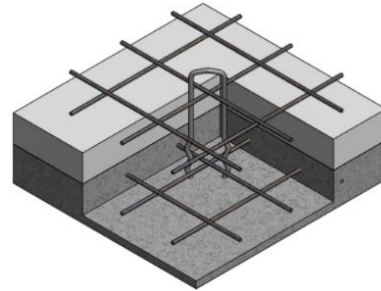
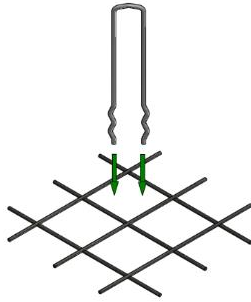
SANDWICH PANEL ANCHOR SYSTEM | TVH **PANEL TIE - STRAIGHT HAIRPIN**



PLACING THE STRAIGHT HAIRPIN "TVH"

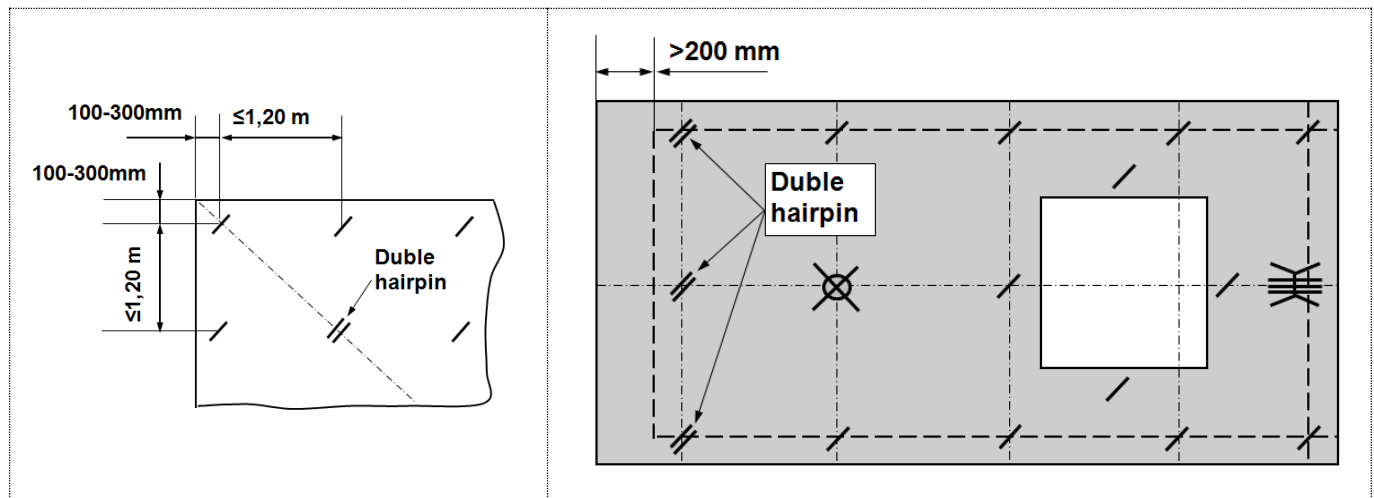
The straight TVH hairpin is installed when the concrete of the outer layer still exhibits sufficient plasticity. The pin is pushed down into the wet concrete, ensuring that the minimum anchoring length for the waved end is met (> 50mm). The hairpin is then slightly pulled back to prevent the ends from showing when the face of the concrete is washed out, blasted, polished or has an otherwise structured finish. The minimum embedment depth of the closed end in the inner layer is equal to the mounting depth of the bearing anchor (TFA or TMA). After installing the pins, it is necessary to vibrate and compact the concrete to fully eliminate any air pockets.

Note: contact between the poker vibrator and the installed sandwich panel anchors must be avoided during the compaction process.



POSITIONING OF THE PANEL TIES

The panel ties are type tested. A special dimensioning of these restraint hairpins is not necessary when they are used in combination with a bearing anchor, manchet or plate anchor if the following situations are observed:



The maximum distance between hairpins must not exceed 1.2 m. For large adhesion forces to the formwork, such as textured finishes, the maximum distance between hairpins must not exceed 0.9 m. The positioning grid for the hairpins must not exceed or fall below the ratio 3:4 or respectively 4:3.

The second hairpin at the diagonal must be double. If a manchet anchor or a plate anchor is placed in that position, the use of a double hairpin can be avoided.

Normally the outer layer projects more than 200 mm. In that case, double hairpins with $d = 4.0$ mm are to be used for the first vertical row.

CONTACT



TERWA is the global supplier for precast and construction solutions with multiple offices around the world. With all our staff, partners and agents, we are happy to provide all construction and precast companies who work in the building industry with full service and 100% support.

TERWA CONSTRUCTION GROUP

Terwa Construction Netherlands (HQ)

Global Sales & Distribution
Kamerlingh Onneslaan 1-3
3401 MZ IJsselstein
The Netherlands
T +31-(0)30 699 13 29
F +31-(0)30 220 10 77
E info@terwa.com

Terwa Construction Central East Europe

Sales & Distribution
Strada Sânzieni
507075 Ghimbav
Romania
T +40 372 611 576
E info@terwa.com

Terwa Construction Poland

Sales & Distribution
Ul. Cicha 5 lok. 4
00-353 Warszawa
Poland
E info@terwa.com

Terwa Construction India & Middle East

Sales & Distribution
India
T +91 89 687 000 41
E info@terwa.com

Terwa Construction China

Sales & distribution
5F 504, No. 101 Chuanchang road
PRC, 200032, Shanghai
China
E info@terwa.com

ALL SPECIFICATIONS CAN BE CHANGED WITHOUT PREVIOUS NOTICE.

DISCLAIMER

Terwa B.V. is not liable for deviations due to wear of the products it has delivered. Neither is Terwa B.V. liable for damage due to inaccurate and/or improper handling and use of the products it has delivered and/or use of same for purposes other than those intended.

Terwa B.V.'s responsibility is furthermore limited in accordance with article 13 of the "Metaalunie" conditions, which are applicable for all Terwa B.V. deliveries. The user is responsible for ensuring compliance with all applicable copyright laws. Without limiting the rights under copyright, no part of this documentation may be reproduced, stored in or introduced into a retrieval system, or transmitted in any form or by any means (electronic, mechanical, photocopying, recording, or otherwise), or for any purpose, without the express written permission of Terwa B.V.